



FGF-11 Polyclonal Antibody

Catalog No	YP-Ab-16050
Isotype	IgG
Reactivity	Human;Mouse;Rat
Applications	WB;ELISA
Gene Name	FGF11
Protein Name	Fibroblast growth factor 11
Immunogen	The antiserum was produced against synthesized peptide derived from the Internal region of human FGF11. AA range:21-70
Specificity	FGF-11 Polyclonal Antibody detects endogenous levels of FGF-11 protein.
Formulation	Liquid in PBS containing 50% glycerol, 0.5% BSA and 0.02% sodium azide.
Source	Polyclonal, Rabbit,IgG
Purification	The antibody was affinity-purified from rabbit antiserum by affinity-chromatography using epitope-specific immunogen.
Dilution	Western Blot: 1/500 - 1/2000. ELISA: 1/10000. Not yet tested in other applications.
Concentration	1 mg/ml
Purity	≥90%
Storage Stability	-20°C/1 year
Synonyms	FGF11; FHF3; Fibroblast growth factor 11; FGF-11; Fibroblast growth factor homologous factor 3; FHF-3
Observed Band	25kD
Cell Pathway	extracellular region,
Tissue Specificity	Nervous system.
Function	function:Probably involved in nervous system development and function.,similarity:Belongs to the heparin-binding growth factors family.,tissue specificity:Nervous system.,
Background	The protein encoded by this gene is a member of the fibroblast growth factor (FGF) family. FGF family members possess broad mitogenic and cell survival activities, and are involved in a variety of biological processes, including embryonic development, cell growth, morphogenesis, tissue repair, tumor growth and invasion. The function of this gene has not yet been determined. The expression pattern of the mouse homolog implies a role in nervous system development. Alternative splicing results in multiple transcript variants. [provided by RefSeq, Jan 2015],



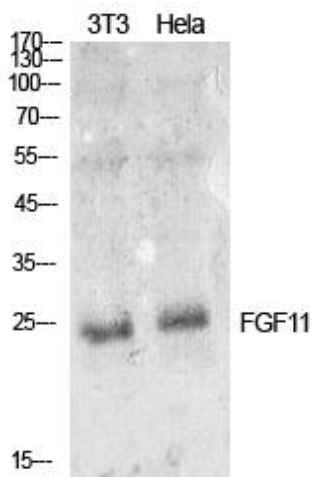
matters needing attention

Avoid repeated freezing and thawing!

Usage suggestions

This product can be used in immunological reaction related experiments. For more information, please consult technical personnel.

Products Images



Western Blot analysis of NIH-3T3, HeLa cells using FGF-11 Polyclonal Antibody. Secondary antibody(catalog#:RS0002) was diluted at 1:20000